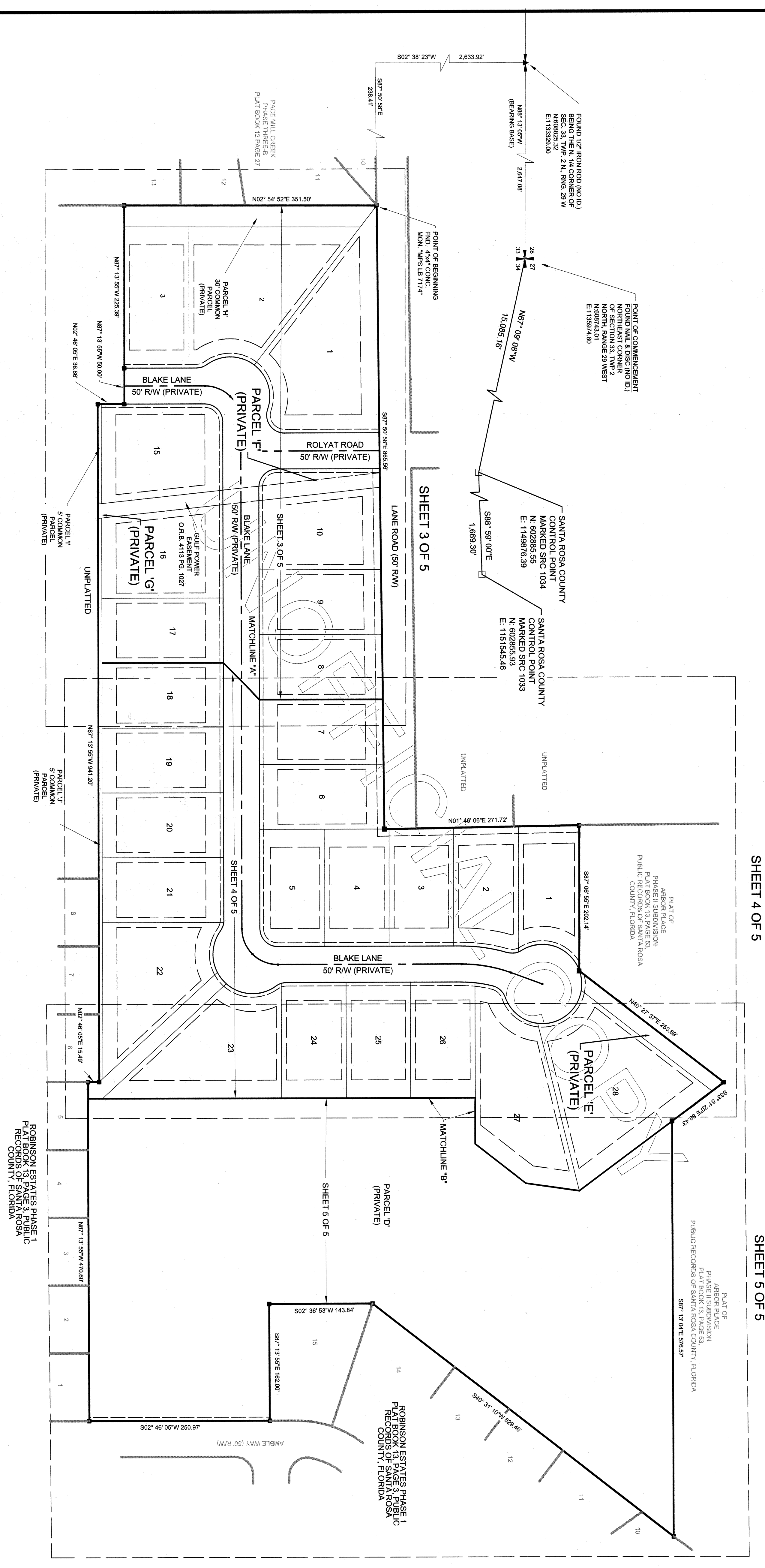


ROBINSON ESTATES PHASE IIB

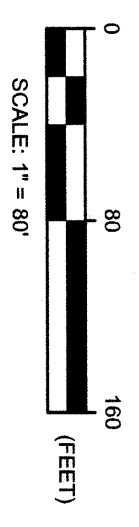
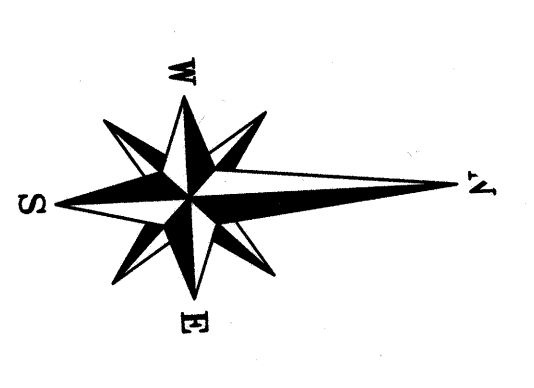
PLAT OF BEING A PORTION OF SECTION 33 TOWNSHIP 2 NORTH, RANGE 29 WEST SANTA ROSA COUNTY, FLORIDA

"KEY SHEET"



OWNER / DEVELOPER
 D. R. HORTON, INC.
 2500 HWY. 28 S.
 CAMDEN, FL 32523
 (850) 937-0446

M M MOTT MACDONALD
 220 West Garden Street
 Suite 700
 Pensacola, FL 32502
 United States of America
 F + 1 (850) 484 8199
 T + 1 (850) 484 6011
 www.motmac.com/americas



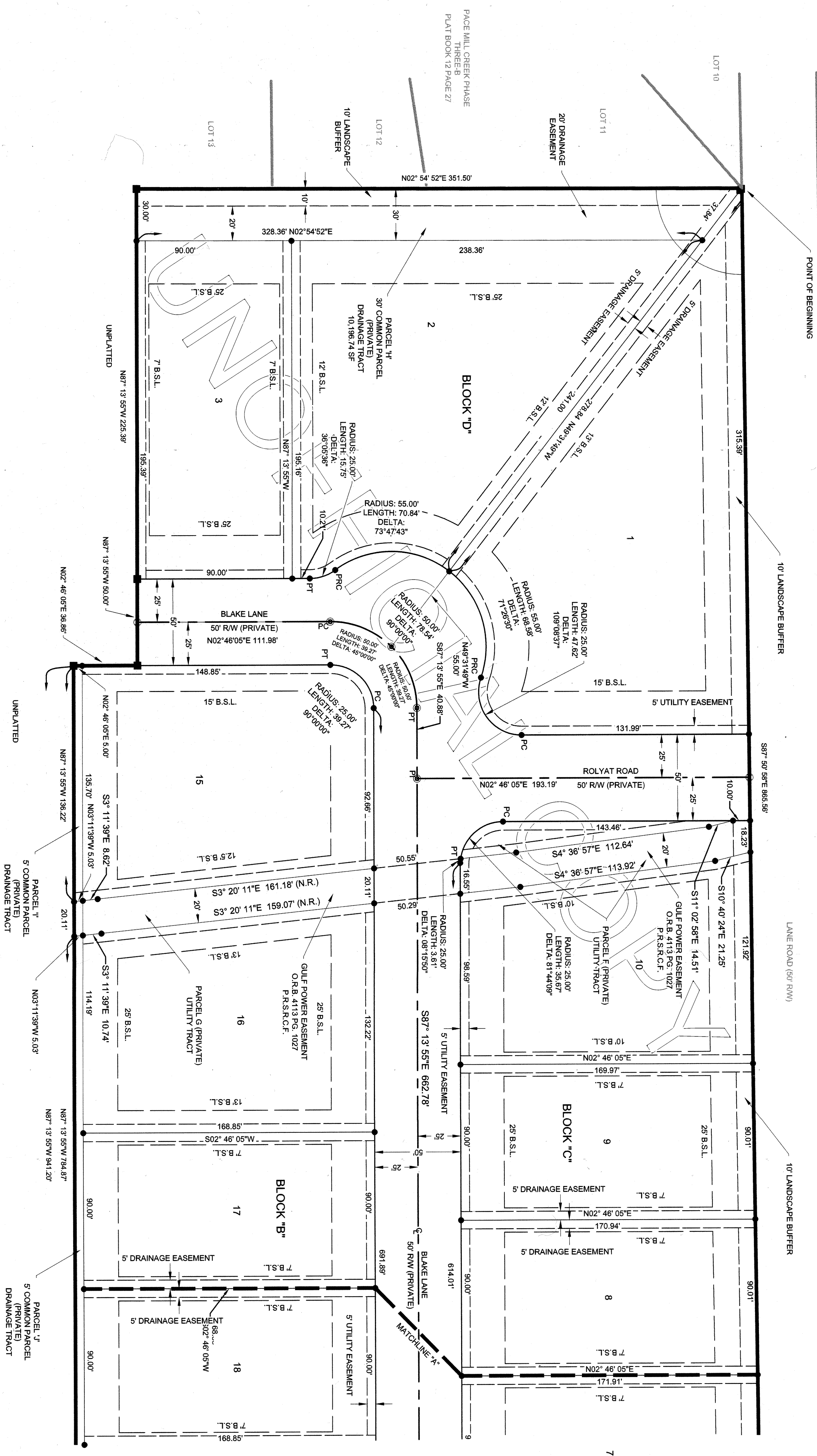
LEGEND

- FOUND P.V.M. CONCRETE MONUMENT INDICATED AS: □
- FOUND PERMANENT REFERENCE MARKERS (P.R.M.) 1/2" CAPRED IRON ROD MARKED "1818"
- INDICATED AS: ○
- SET PERMANENT REFERENCE MARKERS (P.R.M.) 1/2" CONCRETE MONUMENT "400C"
- SET PERMANENT REFERENCE MARKERS (P.R.M.) 1/2" ALUMINUM MONUMENT "400A"
- SET PERMANENT REFERENCE MARKERS (P.R.M.) 1/2" ALUMINUM MONUMENT "400B"
- SET PERMANENT REFERENCE MARKERS (P.R.M.) 1/2" ALUMINUM MONUMENT "400D"
- SET PERMANENT REFERENCE MARKERS (P.R.M.) 1/2" ALUMINUM MONUMENT "400E"
- SET PERMANENT REFERENCE MARKERS (P.R.M.) 1/2" ALUMINUM MONUMENT "400F"
- SET PERMANENT REFERENCE MARKERS (P.R.M.) 1/2" ALUMINUM MONUMENT "400G"
- SET PERMANENT REFERENCE MARKERS (P.R.M.) 1/2" ALUMINUM MONUMENT "400H"
- SET PERMANENT REFERENCE MARKERS (P.R.M.) 1/2" ALUMINUM MONUMENT "400I"
- SET PERMANENT REFERENCE MARKERS (P.R.M.) 1/2" ALUMINUM MONUMENT "400J"
- SET PERMANENT REFERENCE MARKERS (P.R.M.) 1/2" ALUMINUM MONUMENT "400K"
- SET PERMANENT REFERENCE MARKERS (P.R.M.) 1/2" ALUMINUM MONUMENT "400L"
- SET PERMANENT REFERENCE MARKERS (P.R.M.) 1/2" ALUMINUM MONUMENT "400M"
- SET PERMANENT REFERENCE MARKERS (P.R.M.) 1/2" ALUMINUM MONUMENT "400N"
- SET PERMANENT REFERENCE MARKERS (P.R.M.) 1/2" ALUMINUM MONUMENT "400O"
- SET PERMANENT REFERENCE MARKERS (P.R.M.) 1/2" ALUMINUM MONUMENT "400P"
- SET PERMANENT REFERENCE MARKERS (P.R.M.) 1/2" ALUMINUM MONUMENT "400Q"
- SET PERMANENT REFERENCE MARKERS (P.R.M.) 1/2" ALUMINUM MONUMENT "400R"
- SET PERMANENT REFERENCE MARKERS (P.R.M.) 1/2" ALUMINUM MONUMENT "400S"
- SET PERMANENT REFERENCE MARKERS (P.R.M.) 1/2" ALUMINUM MONUMENT "400T"
- SET PERMANENT REFERENCE MARKERS (P.R.M.) 1/2" ALUMINUM MONUMENT "400U"
- SET PERMANENT REFERENCE MARKERS (P.R.M.) 1/2" ALUMINUM MONUMENT "400V"
- SET PERMANENT REFERENCE MARKERS (P.R.M.) 1/2" ALUMINUM MONUMENT "400W"
- SET PERMANENT REFERENCE MARKERS (P.R.M.) 1/2" ALUMINUM MONUMENT "400X"
- SET PERMANENT REFERENCE MARKERS (P.R.M.) 1/2" ALUMINUM MONUMENT "400Y"
- SET PERMANENT REFERENCE MARKERS (P.R.M.) 1/2" ALUMINUM MONUMENT "400Z"
- FOUND MONUMENTATION AS NOTED: ▲
- FOUND MONUMENTATION AS NOTED: ▼
- R.W. = RIGHT-OF-WAY
- L.B. = LICENSED BUSINESS REGISTRATION NUMBER
- B.S.L. = BOUNDARY SETBACK LINE
- N.R. = NON-ROAD LINE
- L. = LINE OR LESS
- D. = IDENTIFICATION
- S.F. = SQUARE FEET
- P.M. = FOUND
- CONC. MON. = CONCRETE MONUMENT
- BM = BENCHMARK
- CI = CHAIN BEARING
- CD = CHORD DISTANCE
- PC = POINT OF CURVATURE
- PT = POINT OF TANGENCY
- PI = POINT OF INTERSECTION
- POC = POINT ON CENTER
- OSL = OFFICIAL RECORDS BOOK
- PL = PLAT
- PARSEC = PUBLIC RECORDS OF SANTA ROSA COUNTY, FLORIDA

ROBINSON ESTATES

PHASE IIB

A PORTION OF SECTION 33
TOWNSHIP 2 NORTH, RANGE 29 WEST
SANTA ROSA COUNTY, FLORIDA

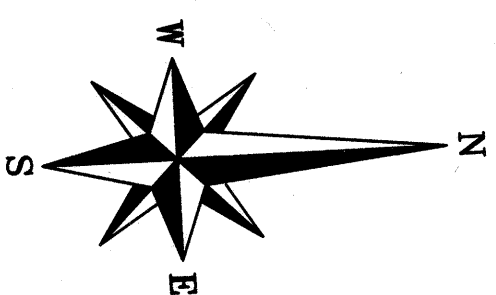


SEE SHEET 4 OF 5

POINT	NORTHINGS	EASTINGS	ELEVATION	SCALE FACTOR	CONVERGENCE	LATITUDE	LONGITUDE	DESCRIPTION
BM 3	669704.44	1153110.76	161.78	0.99997277	-1°19'54.3"	30°26'18.871"	87°09'03.378"	PRM @ SE CORNER OF SUBDIVISION
BM 2	669607.37	1154653.31	161.18	0.99997919	-1°19'56.8"	30°26'28.739"	87°09'03.474"	PRM @ N CORNER OF SUBDIVISION
BM 1	669338.14	1154316.64	163.13	0.99997995	-1°19'58.9"	30°26'23.984"	87°09'03.628"	PRM @ W LINE OF SUBDIVISION
56-89-83-91H	99842.38	1153545.10	N/A	0.99999687	-1°15'13.9"	30°24'01.158"	86°59'42.453"	CONTROL MONUMENT
56-89-83-20H	998478.92	1153649.91	N/A	0.99995688	-1°14'57.6"	30°24'05.978"	86°59'09.927"	CONTROL MONUMENT

OWNER/DEVELOPER
D.R. HORTON, INC.
2450 HWY. 29 S.
CANTONMENT, FL 32538
(850) 537-3445

Mott MacDonald
220 West Garden Street
Suite 700
Panama City, FL 32502
United States of America
F +1 (850) 484 8199
T +1 (850) 484 8011
www.mottmac.com/enr/florida



0 40 80
SCALE: 1" = 40'
(FEET)

